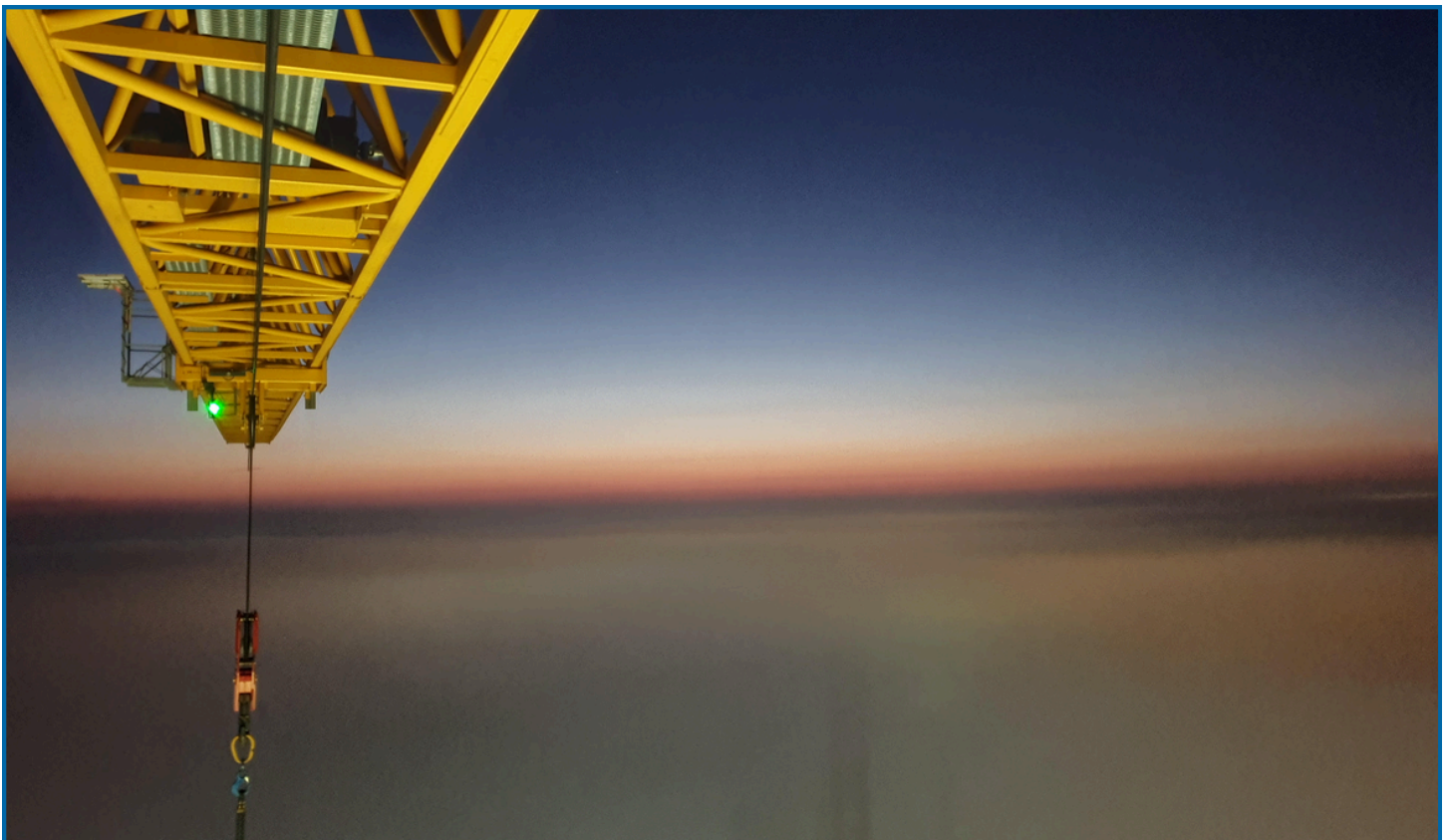




CRANECAMERA

Installation guide for BCS Cranecamera systems:

VH-1250



More Information:

✉ info@cranecamera.eu

🌐 www.cranecamera.eu

Office: ☎ +31 33 466 8938

Service: 📞 +31 6 159 561 05

BCS
CRANECAMERA

Set description:

Introducing the VH-1250 Cranecamera set.

Tailored for crane operations, the VH-1250 offers a compact and highly efficient system with minimal power consumption (1.5 Watt). It operates entirely on solar energy via a solar panel and backup battery, eliminating the need for charging systems.

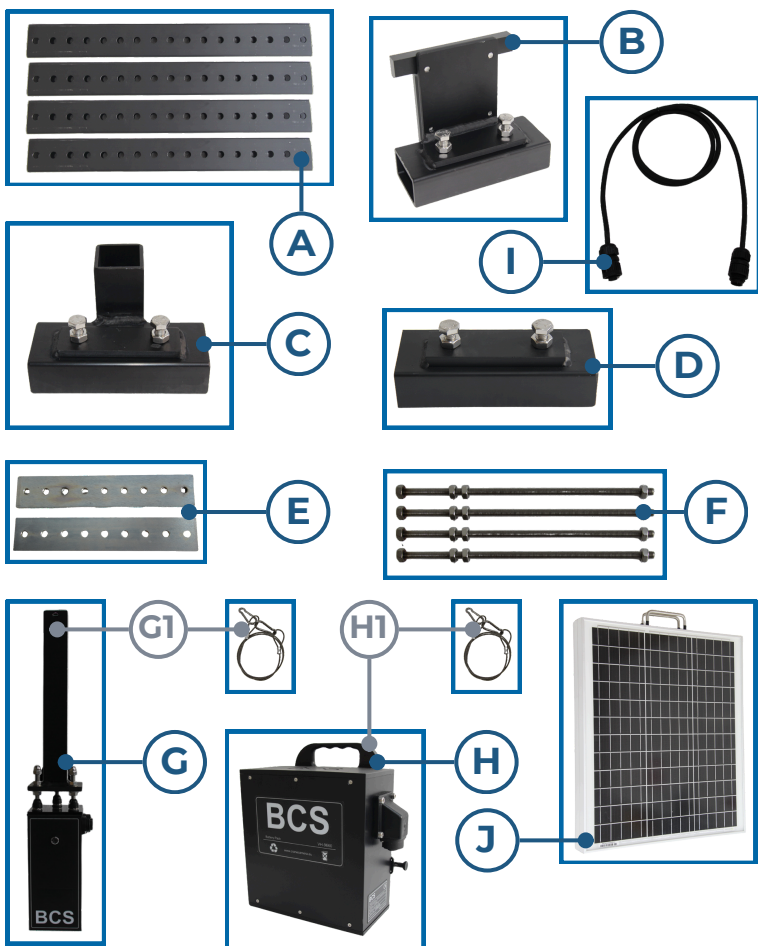
Effortlessly control all functions with the wireless foot pedal. The universal mounting system allows for swift installation on any crane type.

Communication between the camera and receiver is secured through unique identification codes.



1. Trolley component list:

2. Cabin component list:

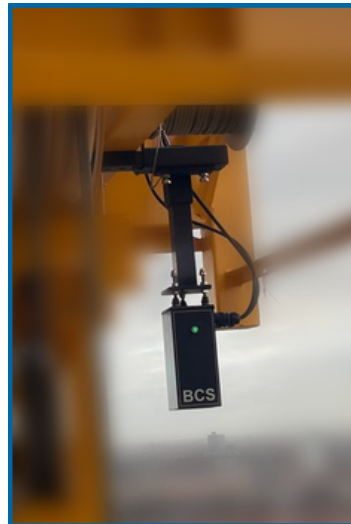
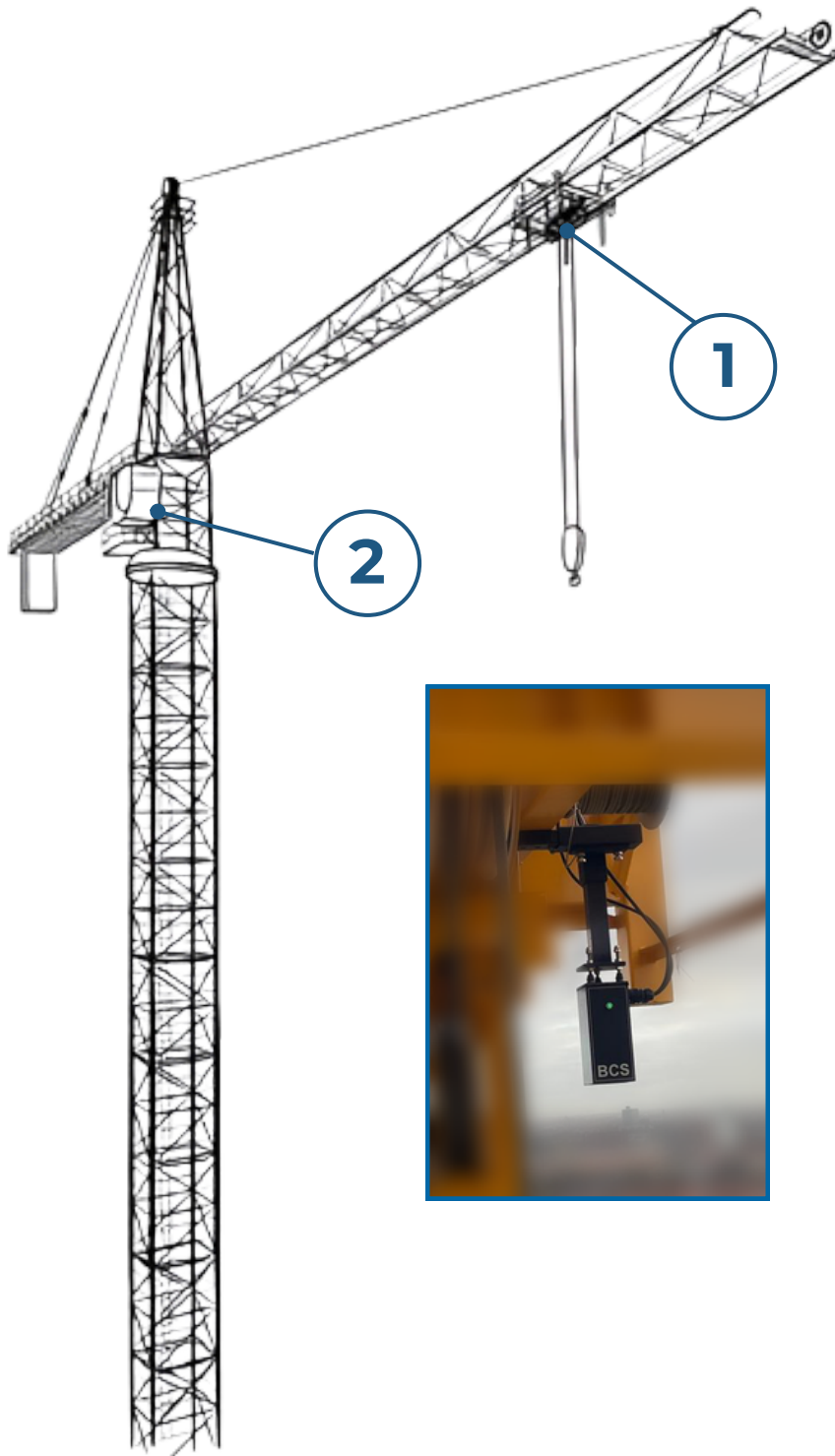


Component guide:

- **A:** Mounting brackets (4 pcs)
- **B:** Battery holder
- **C:** Camera holder
- **D:** Bracket coupler
- **E:** Mounting plates (2 pcs)
- **F:** Threaded ends (4 pcs)
- **G:** Auto-focus zoomcamera 22x optical zoom
 - **G1:** Safety cord (1/2)
- **H:** Batterypack type TC
 - **H1:** Safety cord (2/2)
- **I:** Battery connection cable
- **J:** Foldable solar panel
- **K:** Ram mount
- **L:** High-res widescreen monitor type TC (10" or 13")
- **M:** Power supply for TC monitor (12V)
- **N:** Wireless receiver
- **O:** Wireless zoompedal type TC



Component placement schematic:



- Multiple mounting variations are possible.
- Always make sure the green LED on the camera is facing the cabine without obstacles.

Place the receiver in line of sight with the camera as good as possible.



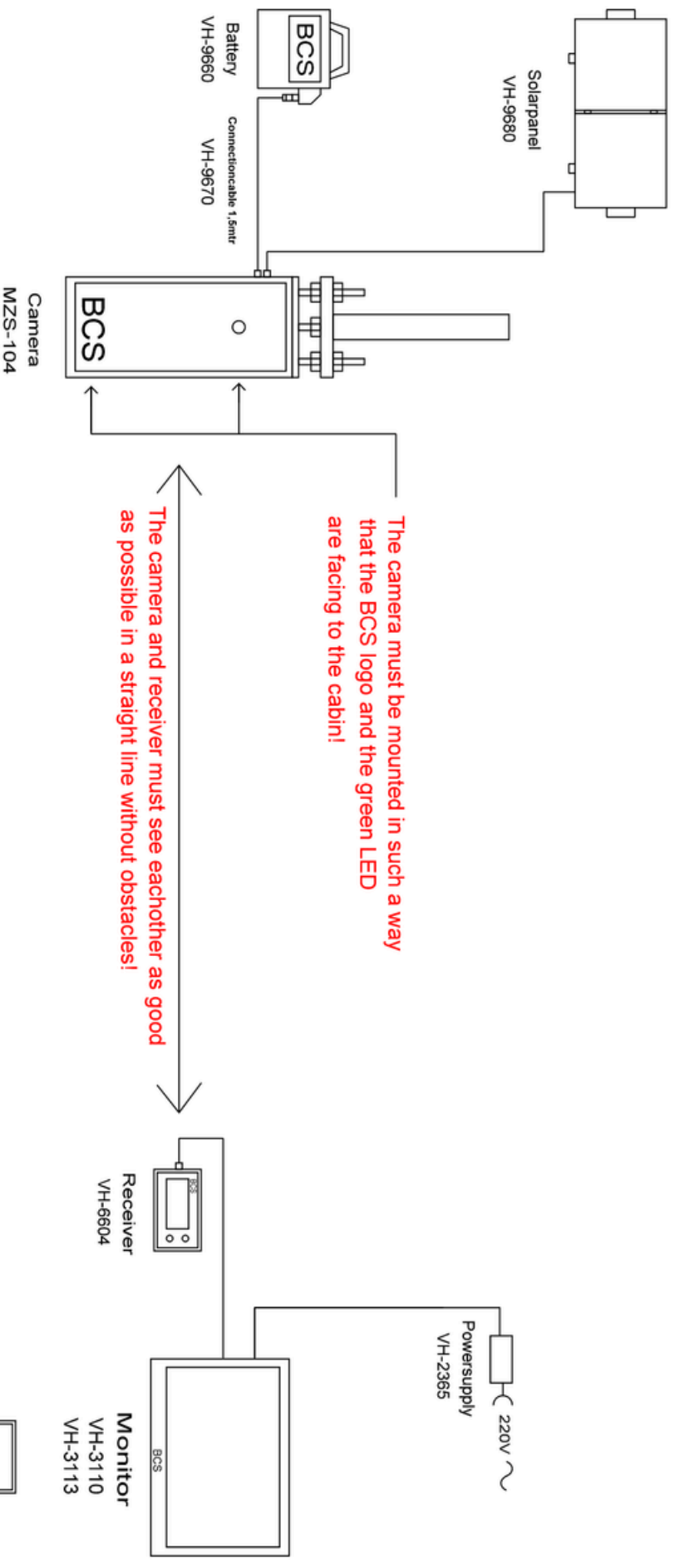
Side-buttons user manual for the high-res widescreen monitor:



Button guide:

- **1:** Open the menu
- **2:** Navigate "Up"
- **3:** Navigate "Down"
- **4:** Navigate "Left"
- **5:** Navigate "Right"





***** Always use the safetycords to secure the camera, batterypack and solar panel *****

Mounting diagram
Solarpanel camerasystem
VH-1250

BCS Cranecamera BV
Kosmonaut 7
3824MK Amerfoort(NL)

CAMERA ADJUSTMENT VH-1250

1. Turn on the camerasystem.
2. Press "Zoom tele" on the zoom-pedal until the camera is fully zoomed.
3. Adjust the viewing angle to a preferred position on the display.
4. Tighten the nuts on the camera bracket with ring-spanner 13.



User manual camerasystem VH-1250



Turning the camera on:

Press the "Zoom tele" button for 2 seconds. The green LED on the camera and the monitor are now ON.

Turning the camera off:

Press and hold the "Zoom wide" button for 10 seconds. The green LED on the camera and the monitor are now OFF.

Pairing the wireless zoom pedal with the monitor:

To wireless pair the zoom pedal with the monitor press and hold the "Learn" button on the back of the monitor, and then press the "Zoom tele" button on the zoom pedal. Now release the button on the back of the monitor. The zoom pedal is now wireless paired with the monitor.

Zoom:

To zoom in, use the "Zoom tele" button. To zoom out, use the "Zoom wide" button.

Lens-heating:

To activate the lens-heating press and hold both "Zoom wide" and "Zoom tele" buttons for 10 seconds. The green LED on the camera will now flash slow. After 5 minutes the lens-heating is automatically turned OFF.



Changing video channels:

There are 7 video channels to be used. To change the video channel use the white UP and DOWN buttons on the receiver.

Position of the receiver:

For a perfect image and reception, mount the receiver as good as possible in line of sight with the camera.

Changing the camera unit ID:

The last 4 digits of the camera's serial number is the camera ID. To change the camera ID in the receiver press and hold the DOWN button until the arrow switches to the second line. Now use the UP and DOWN buttons to change the camera ID to the desired number. When done, wait for 5 seconds until the arrow switched back to the first line.

Important:

The camera system switches off automatically after 10 hours, press "Zoom tele" to switch it on again.

The lens of the camera should be cleaned regularly for an optimal image
Always keep the solar panel free from snow.



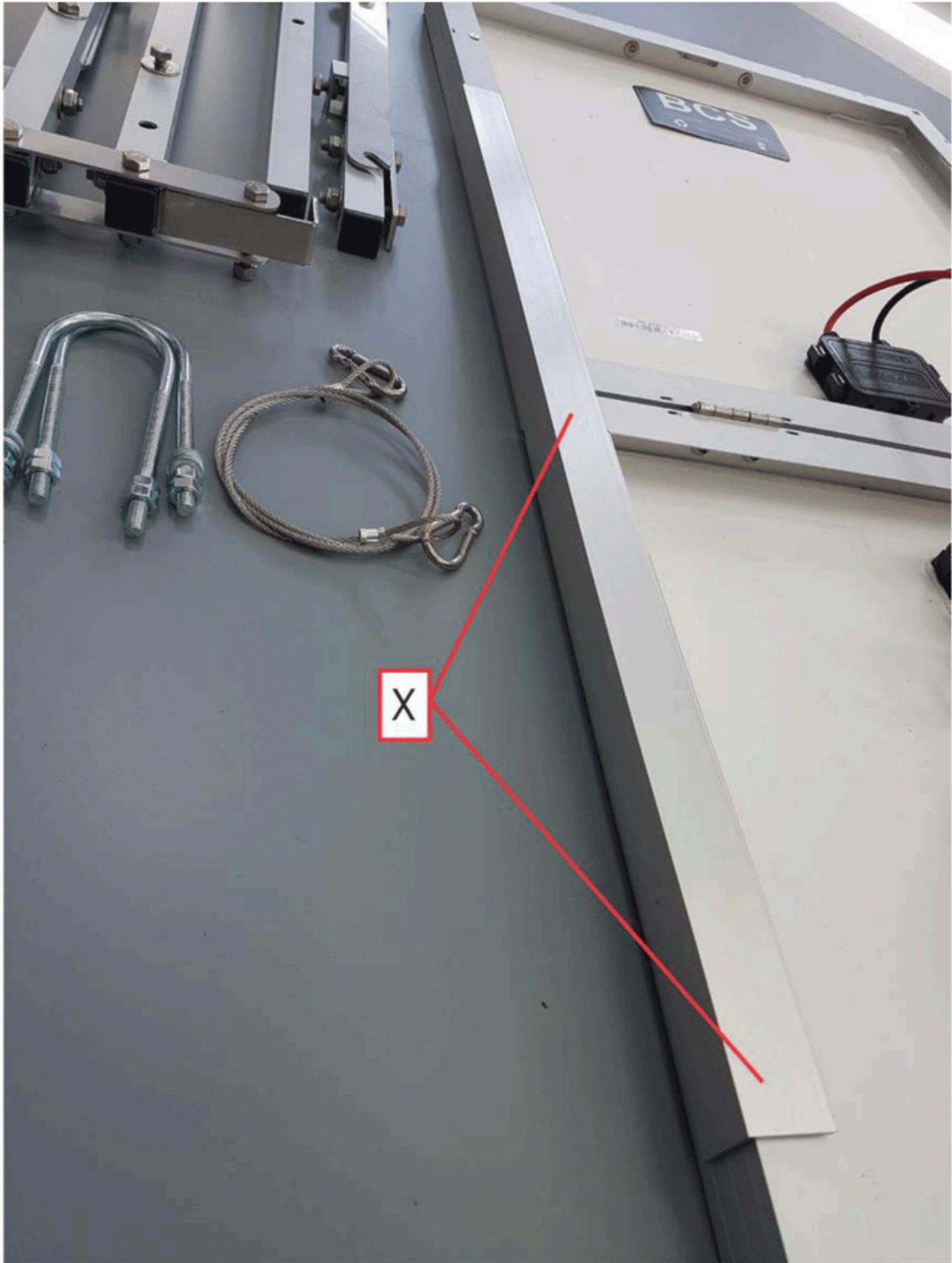
Installation manual VH-9680



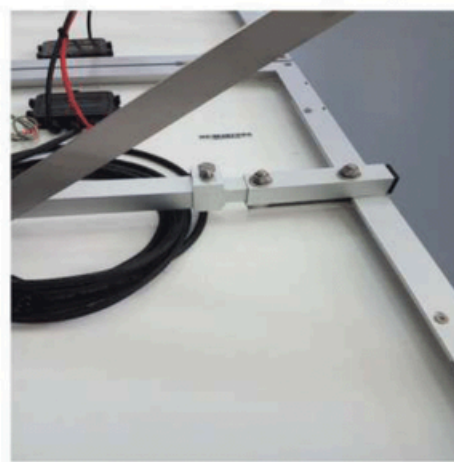
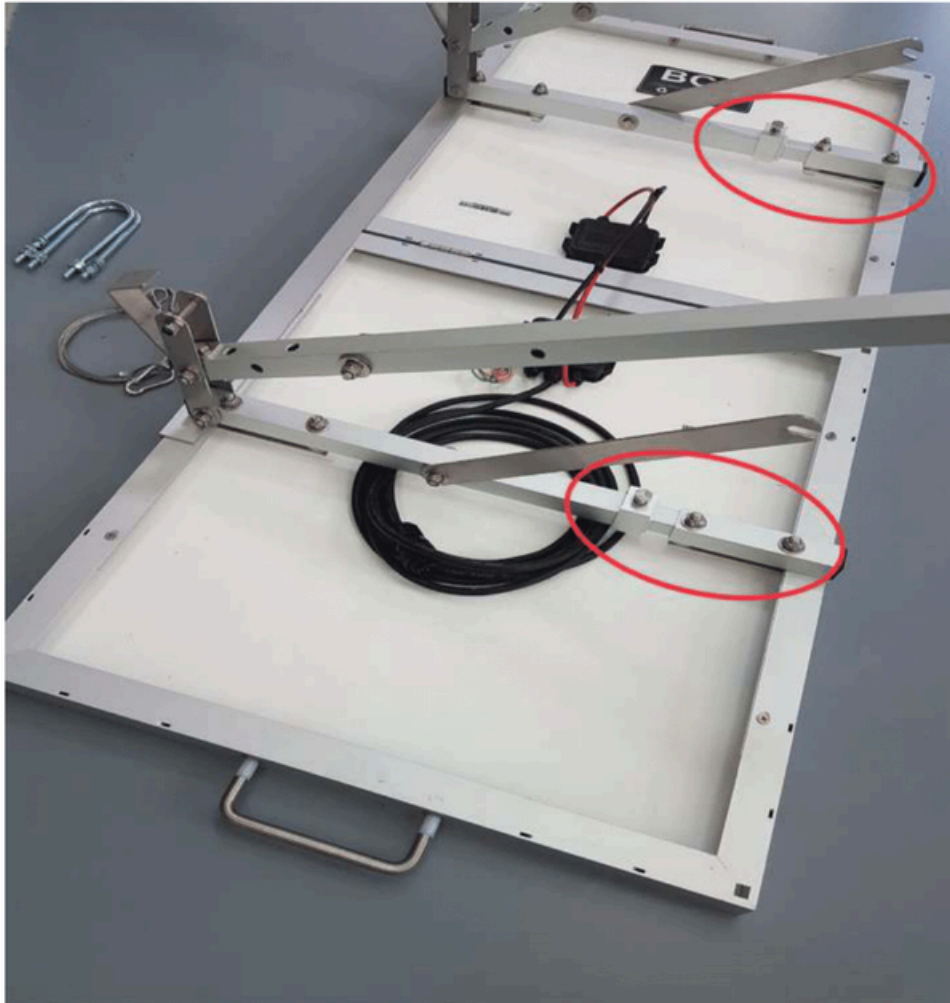
1. Unfold the solar panel on the jib, the back-jib or on top of the basket.



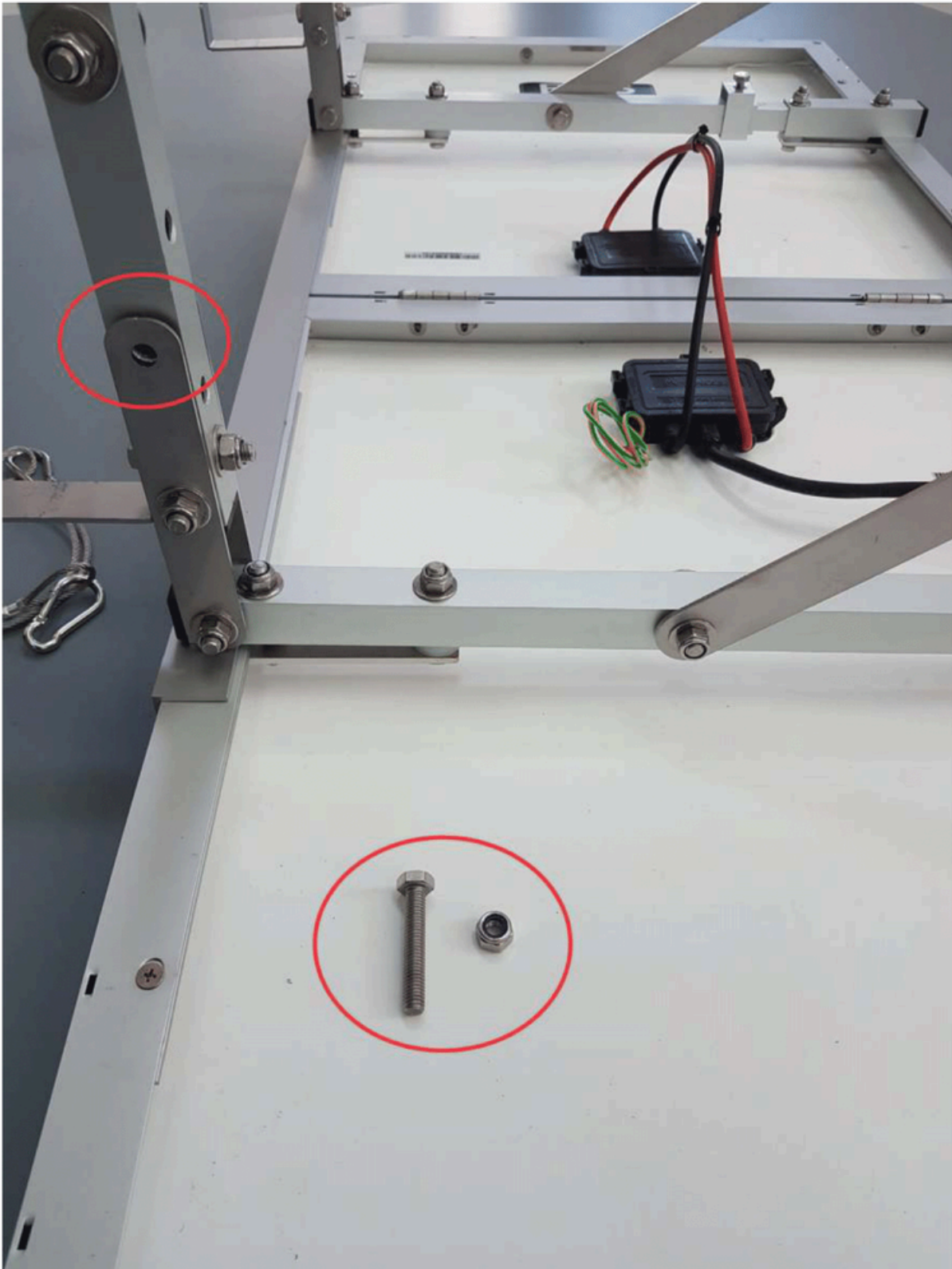
2. Take out the brackets, strip and U-bolts.



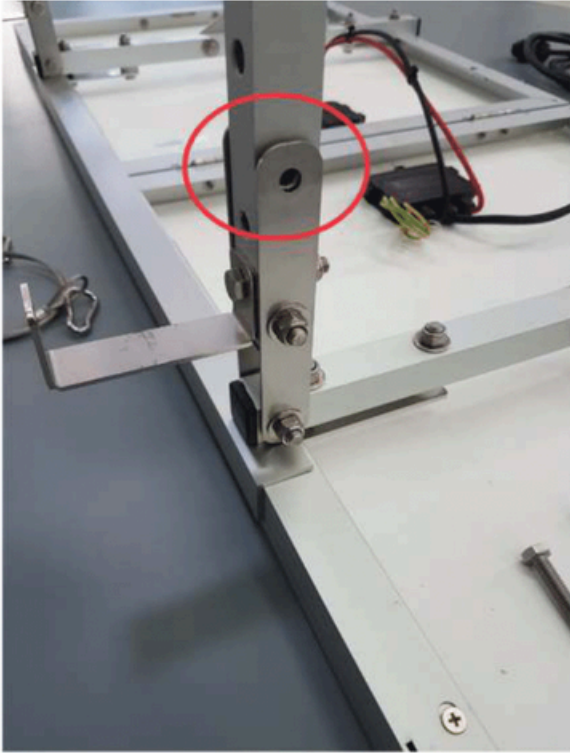
3. Put the strip (Pos. X) on the side of the solar panels, covering both panels.



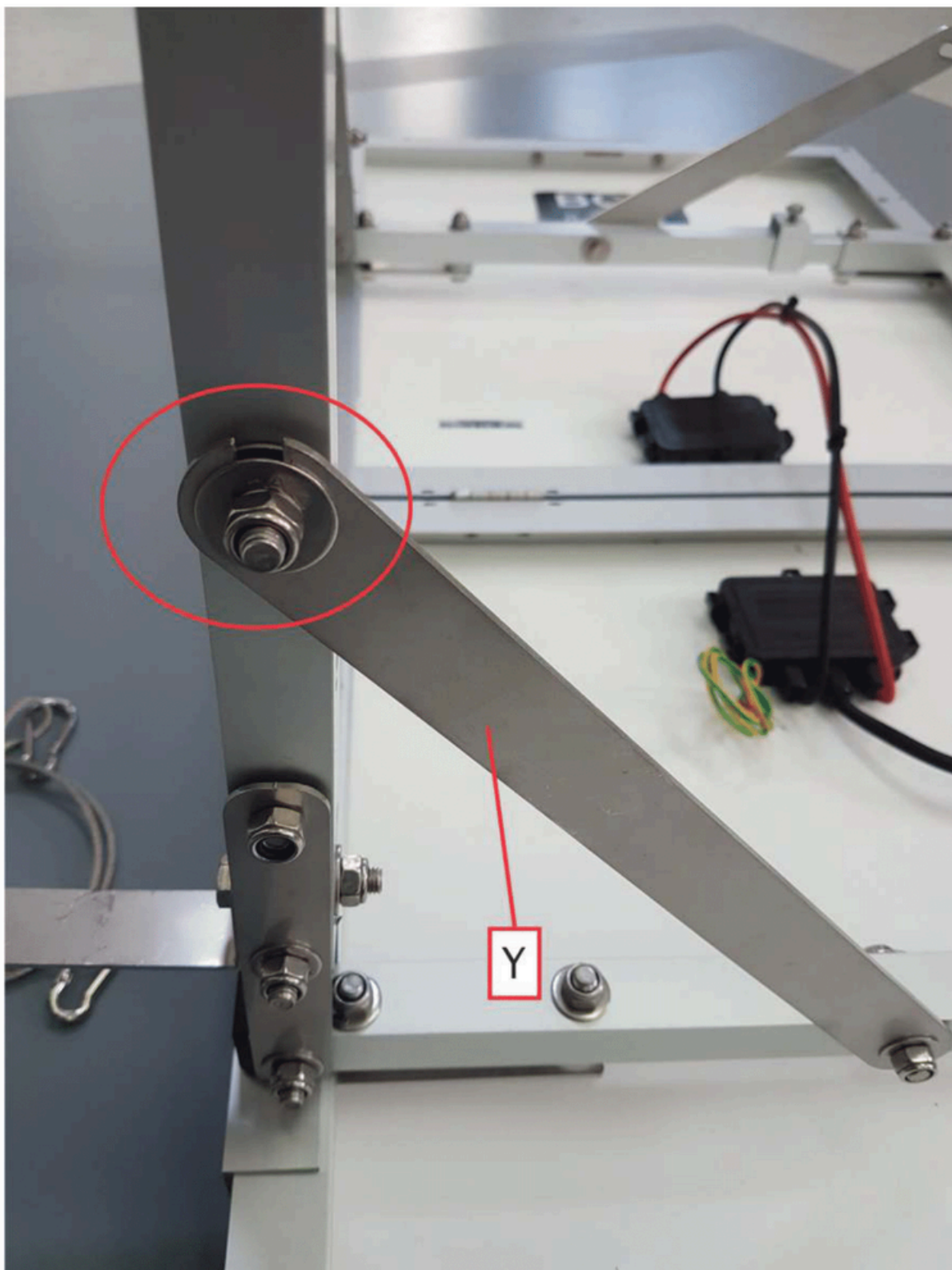
4. Put the brackets on the edges of the panels, and extend them so they fit (marked red).
The distance between the brackets is depending on the size of the basket.



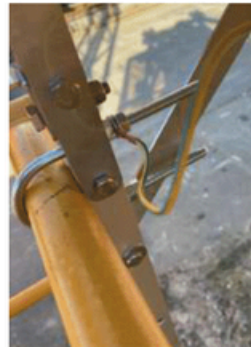
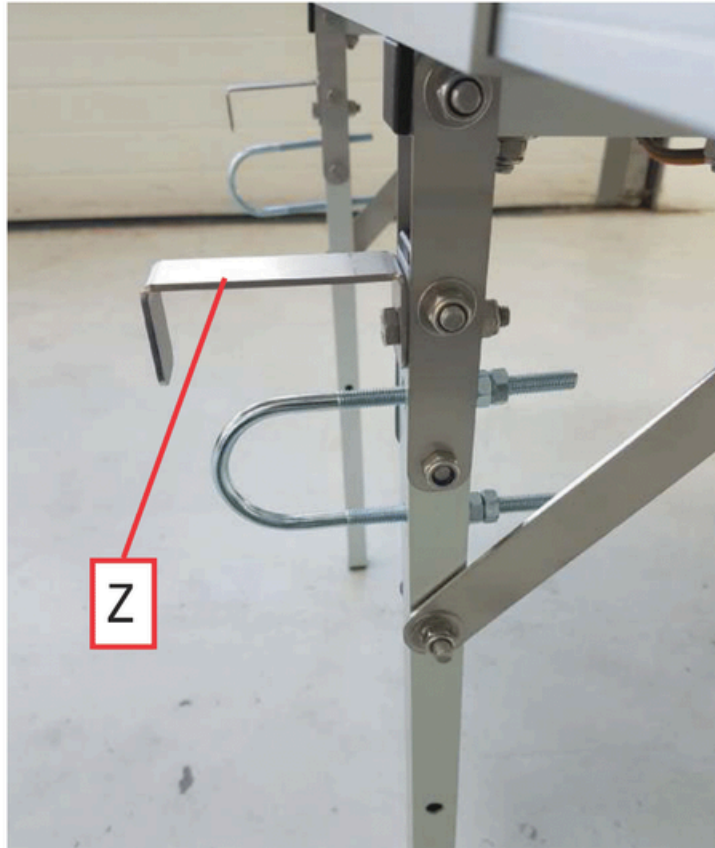
5. Remove the bolt and nut (marked red) and fold the bracket in a vertical position. Do this for both brackets.



6. Put the bolt and nut back in the marked hole and screw tight. Do this for both brackets.



7. Put the diagonal bracket (Pos. Y) in between the 2 rings, and screw the nut tight.



8.
Place the solar panel on the outside of the basket.
Let it rest on the 2 U-formed strips (Pos Z).

Now lift it up a bit and put in the U-bolts and screw them tight.

Connect one side of the safety cord to the handle of the solar panel and the other side to the basket or trolley.